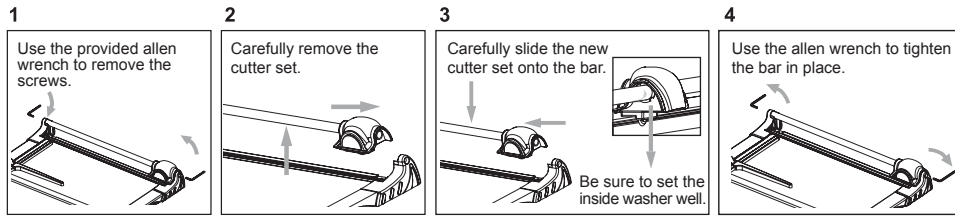


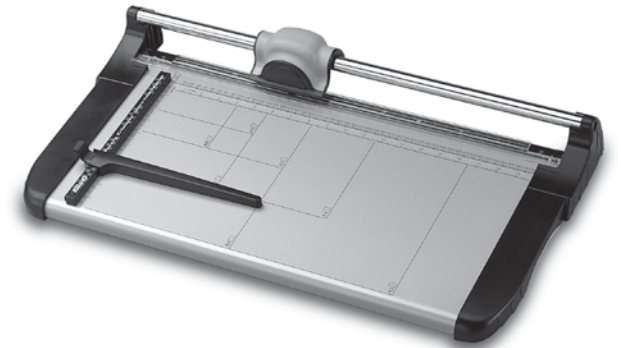
## Replacement cutter



## Care and Maintenance

### CAUTIONS:

1. In order to avoid damaging the product, never immerse the product in water or other liquids.
2. Do not use abrasive cleaners on the product.
3. Dust the blade with a soft cloth, using extreme caution when cleaning near the blade.



# **ROTARY TRIMMERS**

The operating instructions





**BEFORE USING THIS PRODUCT, READ, UNDERSTAND, AND FOLLOW THESE INSTRUCTIONS.**

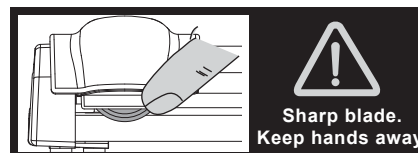
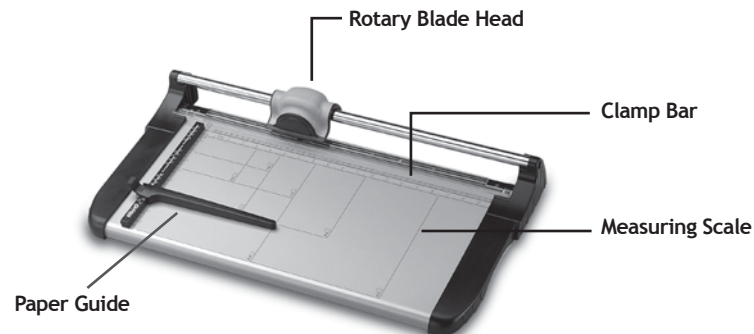
Save these instructions for future reference.

**FOR INDOOR USE ONLY**

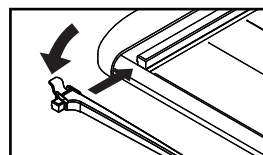
## IMPORTANT SAFEGUARDS

- **Read all the instructions before using the product.**
- This product is not intended for use by children. Keep product out of the reach of children and pets.
- This product is intended for trimming the paper. Do not use the product for any other purposes.
- Keep all loose items (e.g. jewelry, clothing, neckties, etc.) away from the blade to avoid injury or damage to the product.
-  To avoid damaging the product
  - Remove the paper clips and staples from items before trimming the paper.
  - Never lubricate the cutting blade.
  - Do not expose the product to water or other liquids.
-  To avoid possible severe injury
  - Never operate the trimmer without the blade guard in place.
  - Never carry the trimmer by the blade.
  - Never carry the trimmer by the rotary blade handle.
- Do not attempt to dislodge jammed debris by using a pointed object, as injury or product damage may occur.
- Always operate the product on a flat, level, steady surface to avoid it overturning.
- Do not hang the product on the wall.
- This product is intended for indoor use only. Do not use or leave this product outdoors.

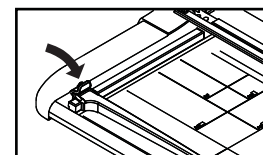
## Components Description



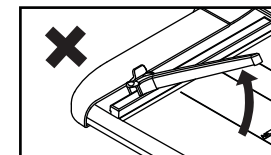
## How to use



1. Place the paper under the clamp bar as the picture shown.



2. Press and lock the paper guide.



3. To avoid breaking the paper guide, do not lift it vertically from the end.



1. Put the paper under the clamp bar.



2. Adjust the paper guide to a proper position



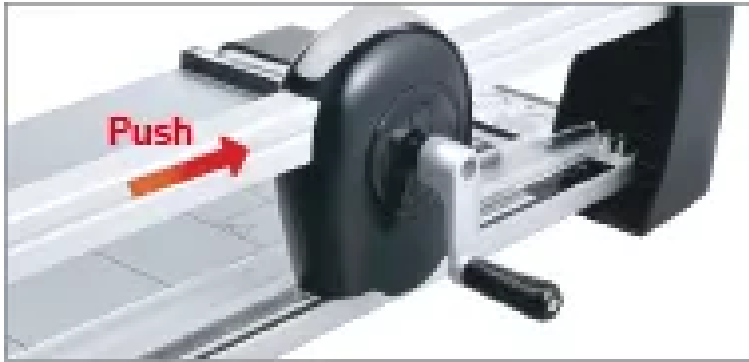
3. Press and slide the rotary blade head forward or backward to cut through the paper.

**SAVE THESE INSTRUCTIONS FOR FUTURE REFERENCE**



1. Push in the hand crank

2. Rotate the hand crank to cut through the stack of paper



3. Simply slide the cutting head to cut through the stack of paper