

MR COLLECTION

USE AND CARE GUIDE



From a
100-year heritage
of crafting the
world's finest pens
comes



Featuring extraordinary
writing instruments for
everyday use.

Pilot MR Collection pens are
refillable with Pilot or Namiki
brand inks and mechanical
pencil leads.

PILOT MR

THE METROPOLITAN COLLECTION™

The MR Metropolitan Collection features polished accent bands and a stylish matte finish over brass barrels. Available in three sophisticated, modern finishes with stainless steel accents.



MEDIUM NIB
FOUNTAIN PEN



FINE POINT
GEL ROLLER



MEDIUM POINT
BALL POINT



BLACK



SILVER



GOLD

PILOT MR

ANIMAL COLLECTION™

The MR Animal Collection presents an array of animal print accent bands for just a touch of the exotic. Expertly crafted with premium brass barrels in five elegant finishes.



MEDIUM NIB
FOUNTAIN PEN



FINE POINT
GEL ROLLER



MEDIUM POINT
BALL POINT



0.5MM
PENCIL



CROCODILE



LIZARD



PYTHON



LEOPARD



WHITE TIGER

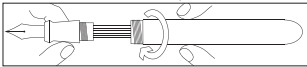


3855 Regent Boulevard • Jacksonville, FL 32224
Phone: (904) 645-9999 • pilotpen.us

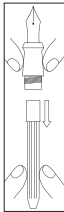
FOUNTAIN PENS

Using an Ink Cartridge

- 1 Unscrew the neck from the pen barrel.



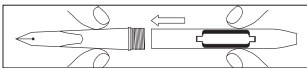
- 2 Remove empty cartridge by pointing the nib upward and pulling straight down while holding the neck.



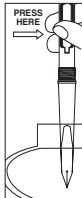
- 3 Firmly insert a new cartridge by putting it in straight without turning or twisting, otherwise the valve may not open. You may feel or hear a slight click when the cartridge is fully inserted.

Using a Plate Press (Standard) Converter with an Ink Bottle

- 1 Unscrew the neck from the pen barrel.
- 2 Remove the empty ink cartridge and firmly insert the converter.



- 3 While holding the pen vertically, immerse the nib into ink up to the top of the neck. Press the plate of the converter and release it, allowing the ink to be absorbed into the tube of the barrel. Absorption will be completed when the tube restores to its original shape.



NOTE:

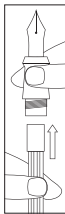
- Filling the ink converter may be difficult or impossible when the ink supply in the bottle is low. In this case, opening a new bottle is recommended.

Replacing a Converter with Ink Cartridge

- 1 Hold the neck of the pen with the nib pointing upward and slowly remove the converter while twisting it slightly.
- 2 Any ink remaining in the converter should be washed off with water. Dry the converter completely and store it for future use.

NOTE:

- When using a fountain pen for the first time, squeeze the inserted cartridge gently 2 to 3 times to get the ink to flow down to the nib point.
- Avoid ink spilling by pointing the nib upward while replacing the cartridge. Pilot IC-50 and IC-100 ink cartridges must be used.
- We recommend using only Pilot and Namiki bottled ink. Other inks with deposits may eventually cause ink flow problems.



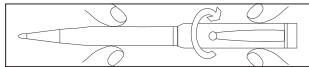
Fountain Pen Care & Cleaning

Always replace the cap on your fountain pen after use. Your fountain pen will function better if cleaned every two months. Remove the ink cartridge or converter and let a slow stream of cold water flow through the nib and barrel. Shake out any excess water and dry the nib with a soft cloth.

BALL POINT PENS

Before & After Writing

- 1 Grasp the barrel with one hand and gently rotate the cap to expose the writing tip.



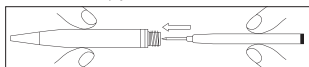
- 2 Retract the tip by rotating cap in the opposite direction.

Replacing Empty Refills

- 1 Remove the cap by turning it.



- 2 Pull out the empty refill.



- 3 Insert a new refill in the barrel.

- 4 Replace the cap.

NOTE:

- We recommend using only Pilot Dr. Grip Center of Gravity refills to ensure proper functioning of your ball point pens.

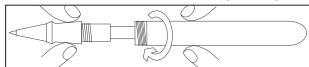
GEL ROLLER PENS

Before & After Writing

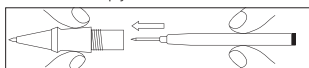
- 1 Remove the cap to expose the writing tip.
- 2 Replace cap after writing.

Replacing Empty Refills

- 1 Remove the cap.
- 2 Unscrew the neck from the barrel by turning.



- 3 Pull out the empty refill.



- 4 Insert a new refill in the barrel.

- 5 Reconnect the neck on the barrel by turning.

NOTE:

- We recommend using only Pilot G2 refills to ensure proper functioning of your gel roller pens. Refills available in a variety of point sizes.

MECHANICAL PENCILS

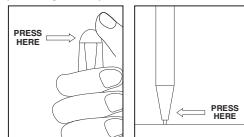
For Writing

- 1 To expose lead for writing, push down on the top end of the cap.



After Writing

- 1 To retract lead, gently push on the lead end while depressing the cap.



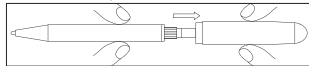
Refilling Lead

If Additional Lead in Barrel

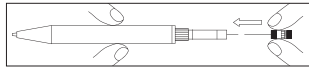
The lead may retract during writing if it becomes too short. Press the cap until a new piece of lead protrudes.

To Replenish with New Lead

- 1 Remove the cap.



- 2 Remove the eraser and insert new lead(s) into the lead reservoir.



- 3 Replace the cap and press repeatedly until a new lead appears.

CAUTION:

- The lead reservoir is designed to hold a maximum of 4-5 pieces of lead. If too many leads are inserted, the new lead may not properly pass into the guide piece. If new lead still does not appear, please clean the point end with the cleaning pin attached to the back of the eraser.

NOTE:

- We recommend using only Pilot lead to ensure proper functioning of your mechanical pencils. Refilling lead is available with a hardness from 2B through 2H.

Pen & Pencil Care

To keep your writing instrument's surface in mint condition, use a soft polishing cloth. Avoid using strong cleaning agents or chemicals.