





TARGET
OFFICE SYSTEMS



HEAT



COLD

LAMINATORS

FOUR SILICON ROLLERS HIGH PERFORMANCE LAMINATORS



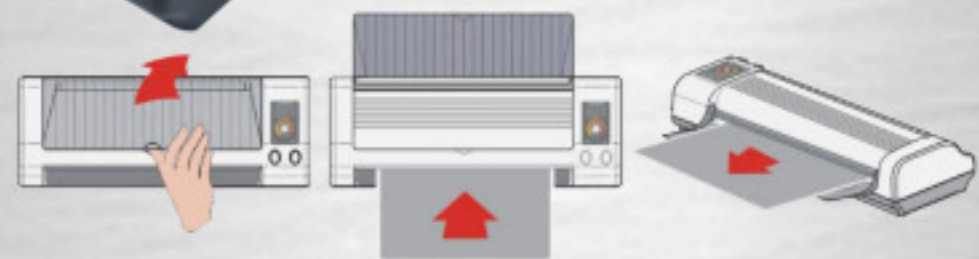
A4 No. 242-1 SPECIFICATION

| | |
|------------------|-------------------------------|
| Rollers | 4 Silicon Rollers |
| Voltage & Power | AC 220~240V.50/ 60 Hz.360W |
| Max. Width | A4/242mm |
| Laminating Speed | 360mm/min |
| Pouch Thickness | 75-200 micron |
| Ready Time | 5-6 minutes |
| Dimension | 363X168X102mm |



Temperature Adjustable Reverse/Heat/Cold Lamination

- Used to preserve your important documents and to protect them from dirt, water, etc. For laminating photos, printed copies, ID cards, licenses, certificates and other important documents.
- Temperature can be adjusted to laminate film pouch between 75mic to 200mic.
- Switch to normal temperature to laminate cold films.
- Reverse function: copies can be taken out at any point during lamination by using "Reverse" switch.
- Easy to operate, power failure proof and high temperature proof.
- An ideal machine with attractive design for home, office, school etc.



Open the paper slider, press the switch to "START" position, then swift the temperature controller to a suitable position according to thickness of the items being laminated and thickness of film pouch.

The "READY" green light indicator will be lit during health time. When the green light turns off the machine will be ready for laminating.

Insert the copy to be laminated into the front opening of the laminator, lamination is not finished until the pouch securely goes to the top of paper slider. After you finish laminating, press the switch to "STOP" position and pull out the plug.



A4 LAMINATOR 242-1

**LAMINATING
SPEED
360mm/min**



LAMINATING MACHINE

A4 Laminator 242-1

