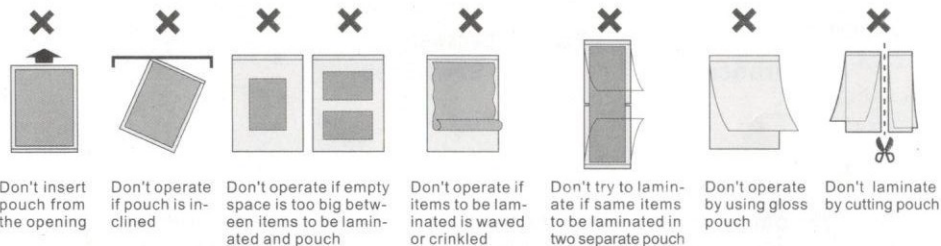


V. IMPORTANT

1. When the machine is working; Pull out the slider first, and do not touch the radiation window on the upper cover do not put any items on the upper cover.
2. The socket outlet shall be installed near the equipment to be easily accessible.
3. Please turn off the machine to cool it after 3 hours continuous working.
4. Turn off the power after use and unplug the outlet.
5. For indoor use only.
6. To reduce the risk electric shock, do not perform any servicing unless you are qualified.
7. Avoid following incorrect operation to protect films from being jammed or wrapped.

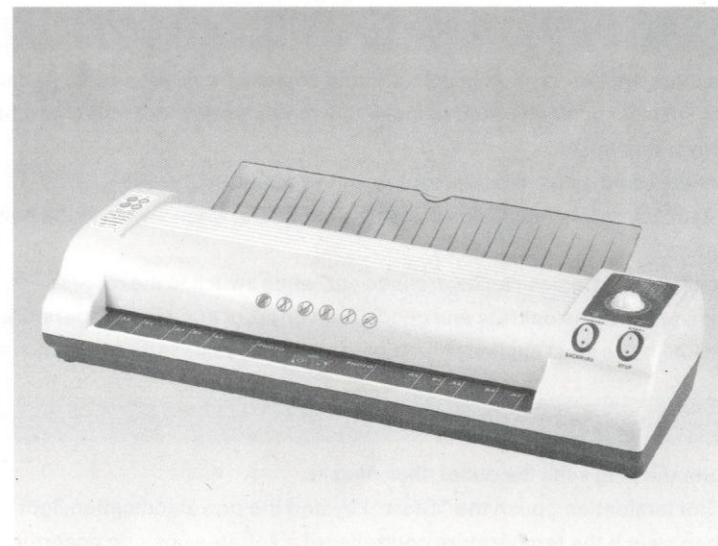


VI. HANDLE METHODS FOR SIMPLE MALFUNCTIONS.

| Malfunction | Possible reason | Handle method |
|--|--|---|
| 1. Laminated pouches seems blurred or not sticky | The set temperature does not conform to the need of thickness of pouches. | Adjust the temperature controller and reset the temperature according to the thickness the pouches. Laminating again after the green indication light quit glitter. |
| | The laminated item gets wet. | Dry the laminated item before lamination. |
| 2. There are wrinkles or bubbles after lamination. | The selected temperature is too high and does not conform to the need of the thickness of the pouches. | Reduce the set temperature, adjust the temperature controller to the corresponding mark according to the thickness of pouches. Try to laminate again after 5 to 10 minutes. |
| 3. The machine does not heat while the green is glowing. | The heat device inside the machine has been broken. | At this time, you need to contact the after-sale service center or ask help form qualified person. |
| 4. The machine does not work; the outlet. | The plug is not properly inserted into the outlet. | Inspect to plug the outlet properly. |
| | The over-temperature protector of safety tube has been broken. | At this time, you need to contact the after-sale service center or ask help form qualified person. |

INSTRUCTION MANUAL

NO.242-1/NO.332-1 LAMINATING MACHINE



I、 SPECIFICATION

Voltage & power consumption--AC 220V~240V 50/60HZ (NO.242-1:360W), (NO.332-1:450W)

Laminates up to-----NO.242-1(A/242mm) NO.332-1(A3/332mm)

Max Laminating Capacity-----200mic/8mil

Temperature Range-----1~13 Scale 90°C~150°C

Laminating speed----->360mm/min

Outer Dimension----NO.242-1(D363xW168xH103mm) NO.332-1(D450xW168xH103mm)

Weight-----NO.242-1(2.8kg) NO.332-1(3.4kg)

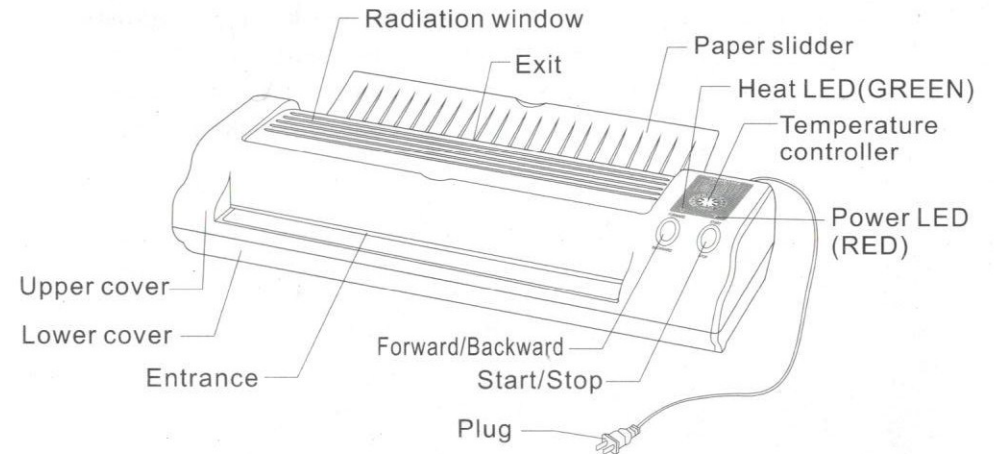
II、 FUNCTION

- 1、 This machine applies to photograph, printing copies, employees card, ID card and paper work etc... This machine is used to make the copies waterproof, more good-looking and long term preservation.
- 2、 This machine could adjust the temperature 1~13 Scale 90°C~150°C
- 3、 Cooling-laminating function: Cold film can be laminated, when switch to the normal temperature.
- 4、 Reversion function: Copies can be dropped out, when switch to the reverse.
- 5、 This machine is easy to operate and good at power-proof and high temperature proof.
- 6、 This machine is the ideal appliance for modern official business with the novel appearance.

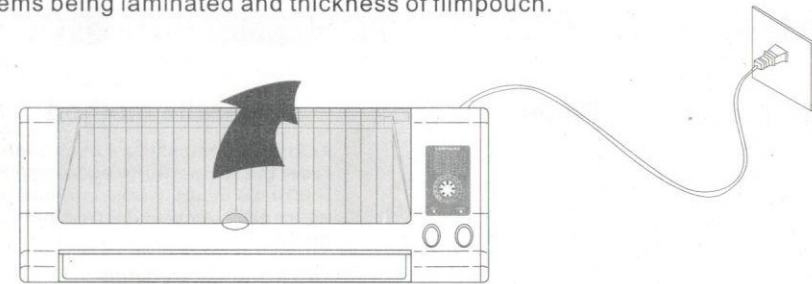
III、 OPERATION INSTRUCTION

- 1、 Make sure the plug suits the outlet, then plug in.
- 2、 Before hot lamination, push the "Start" key and the power indication light (red light) will glow, then switch the temperature controller to a suitable position according to the thickness and spec. Of the copies. The indication light (green light) will glitter during the course of heating. After about 5 minutes, the green light will quit glitter to show it is ready for lamination. If the laminated pouches are blurred, that means the set temperature is not high enough, readjust the temperature controller to a higher temperature. If the bulbs or wrinkles appear on the lamination pouches, that means the set temperature is too high, step-down the temperature controller.
- 3、 Put the copies to be laminated into the pouches and then inserted into the front opening of the laminator. Do not move your hands away until the copies with pouches enter the machine.
- 4、 Push the switch on "Reverse" position, if you need to reverse the laminating punch.
- 5、 Push the switch on "OFF" position and pull out the plug when lamination is finished for safety.

IV、 ILLUSTRATION INSTRUCTION



- 1、 Open the paper slider, press the switch to "START" position, then swift the temperature controller to a suitable position according to thickness of the items being laminated and thickness of film pouch.



- 2、 The "READY" green light indicator will be lit during heating time. When the green light turns off the machine will be ready for laminating.
- 3、 Insert the copy to be laminated into the front opening of the laminator, lamination is finished until the pouch securely goes to top of paper slider.

