



Auto feed paper shredder
Model: TG-75CD

AUTO FEED PAPER SHREDDER



TG-75CD INSTRUCTION MANUAL

Please read these instructions carefully before use



Auto feed paper shredder
Model: TG-75CD

ASSEMBLY

NOTE: This shredder will operate only when used with the supplied basket. The supplied basket has a built-in safety feature which prevents shredder from operating if used with any other basket or if improperly assembled.

CAUTION! This shredder contains sharp edges on the underside of the shredder head. Use caution when positioning the shredder head onto the basket.

OPERATION

Check machine for damage or defect; some particles of paper are normal due to product testing.

1. Place machine on the complanate ground, and Plug power cord into any easily reached standard outlet.
2. Make sure the waste basket in correctly position.
3. To use, have the power switch, located on the right side of the machine, in the ON (I) position.
4. Open the auto feed paper tray, you will hear a slight click when the tray is the correctly position.
5. Use the coin or other tools to revolve knob anticlockwise, make sure the slot on the knob is on aclinic position.
6. The machine will be ready to work when the power light turn green

OPERATION

AUTO

1. The machine will be ready to work on AUTO Setting when you turn on the power switch.
 2. Three inlets include 2 paper inlet and 1 CD inlet will be ready to work when the machine under AUTO mode.
- And machine start working when you insert shredding staff into any one of the inlet.
Mahiche stop working if you insert shredding staff to 2 or 3 inlets at one time.
3. The machine will stop automaticaly and resume to AUTO mode after finish shredding.
 4. If BINFULL light on, please clear the waste paper/CD accordingly
 5. If OVERHEAT light on, Please stop the machine for moments until it's cool down.
 6. If OVERLOAD light on, check if the shredding pieces inserted is out of rated capacity. please reduce the pieces to the rated capacity and press AUTO .

REV

1. Press REV switch to clear the jammed paper/CD/Credit card.
2. For paper jammed in Auto feed inlets, you may also follow the step printed on the machine to clear the Jams.

FWD

1. Press FWD, the unshredded pieces will be totally shredded and fall into the bin.
2. Press FWD and FWD in turn will help to clear the Jammed pieces inside the blade.

IMPORTANT SAFEGUARDS

⚠ WARNING

- 1 NEVER insert hands or fingers into paper entry as serious personal injury may result.
2. THIS MACHINE IS NOT A TOY. Keep children and pets away from shredder AT ALL TIMES as serious injury may result. Always unplug shredder when not in use.
3. Keep loose objects (jewelry, long hair) away from shredder. These items and others like them may cause serious injury if they accidentally fall into the paper entry.

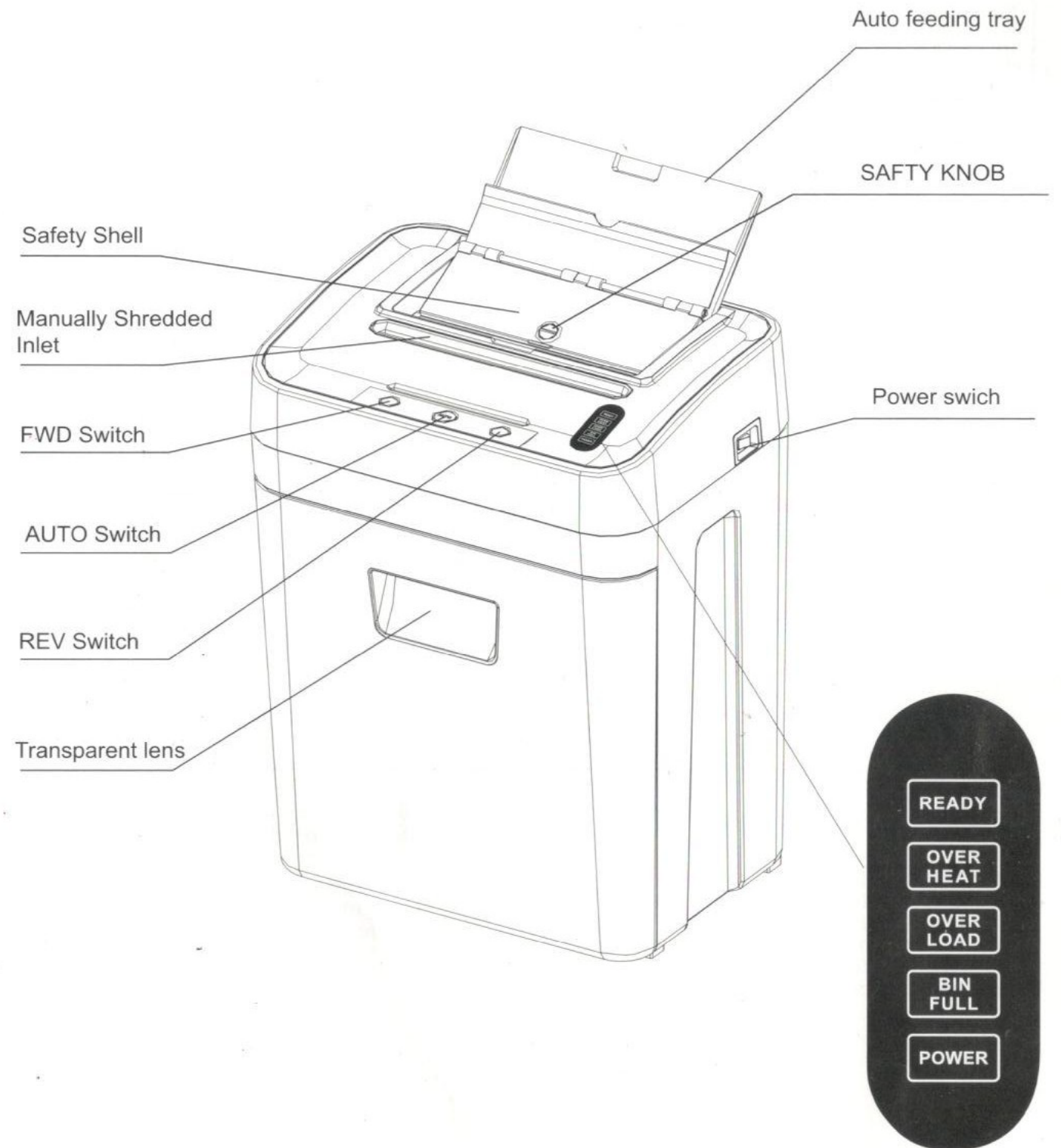
⚠ CAUTION!

1. This shredder contains sharp edges on the underside of the machine head. Use caution when positioning the shredder head onto the basket.
2. Do not exceed recommended sheet capacity.
3. Do not shred plastic (except credit cards), adhesive labels, transparencies, newsprint, or cardboard.
4. This personal shredder is intended for paper only. Do not attempt to shred large paper or other hard materials (except staples and small paper clips).
5. Do not place shredder near or over a heat source or water.
6. Always turn off and unplug unit before moving or cleaning and when not in use.
7. Do not insert aerosol cleaners into or around the shredder. Some agents may combust, causing serious injury.
8. Never use flammable synthetic oil, petroleum-based or aerosol lubricants to oil the cutting blades. Some agents may combust, causing serious injury. Use only a recommended oil in a non-aerosol container. See MAINTENANCE.
9. Do not use this product if it or the cord has been damaged in any way.
10. Do not open the cover for any reason. Doing so can expose you to dangerous voltages and will void your warranty.

Power Cord Care

1. Place power cord in an easily accessible position, because it is the main disconnect switch.
2. Do not place machine where adults, children or animals may walk on the cord.
3. Do not rest anything on the power cord.
4. If an extension cord is used, be sure that all products plugged into the extension cord do not exceed the extension cord ampere rating.

PARTS OF THE SHREDDER





TARGET
OFFICE SYSTEMS

Auto feed paper shredder Model: TG-75CD

ASSEMBLY

NOTE: This shredder will operate only when used with the supplied basket. The supplied basket has a built-in safety feature which prevents shredder from operating if used with any other basket or if improperly assembled.

CAUTION! This shredder contains sharp edges on the underside of the shredder head. Use caution when positioning the shredder head onto the basket.

OPERATION

Check machine for damage or defect; some particles of paper are normal due to product testing.

1. Place machine on the complanate ground, and Plug power cord into any easily reached standard outlet.
2. Make sure the waste basket in correctly position.
3. To use, have the power switch, located on the right side of the machine, in the ON (I) position.
4. Open the auto feed paper tray, you will hear a slight click when the tray is the correctly position.
5. Use the coin or other tools to revolve knob anticlockwise, make sure the slot on the knob is on aclinic position.
6. The machine will be ready to work when the power light turn green

OPERATION

AUTO

1. The machine will be ready to work on AUTO Setting when you turn on the power switch.
2. Three inlets include 2 paper inlet and 1 CD inlet will be ready to work when the machine under AUTO mode.

And machine start working when you insert shredding staff into any one of the inlet.

Mahiche stop working if you insert shredding staff to 2 or 3 inlets at one time.

3. The machine will stop automaticaly and resume to AUTO mode after finish shredding.
4. If BINFULL light on, please clear the waste paper/CD accordingly
5. If OVERHEAT light on, Please stop the machine for moments until it's cool down.
6. If OVERLOAD light on, check if the shredding pieces inserted is out of rated capacity, please reduce the pieces to the rated capacity and press AUTO .

REV

1. Press REV switch to clear the jammed paper/CD/Credit card.
2. For paper jammed in Auto feed inlets, you may also follow the step printed on the machine to clear the Jams.

FWD

1. Press FWD, the unshredded pieces will be totally shredded and fall into the bin.
2. Press FWD and FWD in turn will help to clear the Jammed pieces inside the blade.

WARNING

	NO HAIR
	NO FASTENERS
	KEEP OUT OF REACH OF CHILDREN
	NO FINGERS OR HANDS
	NO LOOSE CLOTHING
	NO AEROSOL CANS
	WHEN SHREDDING PAPER, DO NOT SHRED CD/DVD AT THE SAME TIME, AND VICE VERSA!

Cool-Down Cycle

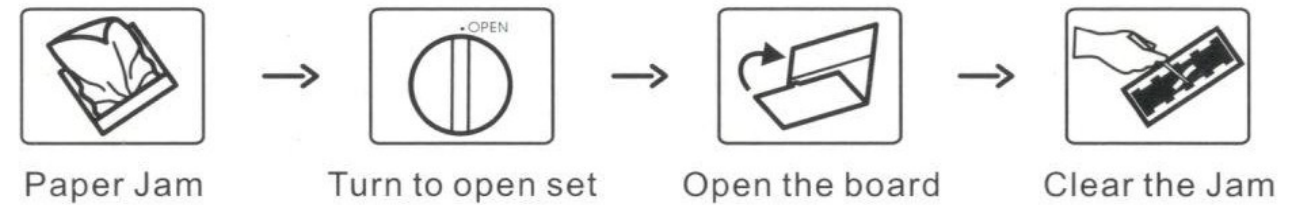
This shredder is protected with a special safety feature which prevents the motor from overheating with extensive use. When shredding is attempted beyond the machine's maximum running time the shredder will automatically shut off its motor until it has cooled to an acceptable operating level. This is normal and the shredder will return to operation after the COOL DOWN period. See PRODUCT SPEC(PAGE 4). for maximum running time and related cooling or OFF time.

PRODUCT SPEC

Voltage:	220V / 60HZ
Sheet capacity(auto):	75 sheets(75g/A4)of paper
Sheet capacity(manual):	6 sheets(75g/A4)of paper
entry width:	220mm
Shred size:	3mm x 9mm
Maximum Running Time:	20 minutes
basket volumn:	23 L
Noise Level:	< 60 dB(A)
N.W /unit:	9.5 kg
unit size:	L370mm x W265mm x H492mm

IMPORTANT SAFEGURDS

Clearing a Jam



TROUBLESHOOTING

Shredder will not operate	Shredder suddenly stops while shredding
<ul style="list-style-type: none"> a. Shredder is not plugged in b. Power switch is in the OFF(0) position c. Shredder is jammed d. Shredder has exceeded the max. RUN TIME and requires a cool-down time e. Shredder is not assembled properly. 	<ul style="list-style-type: none"> a. Shredder has exceeded the maximum run time and requires a cool-down time b. Shredder is jammed